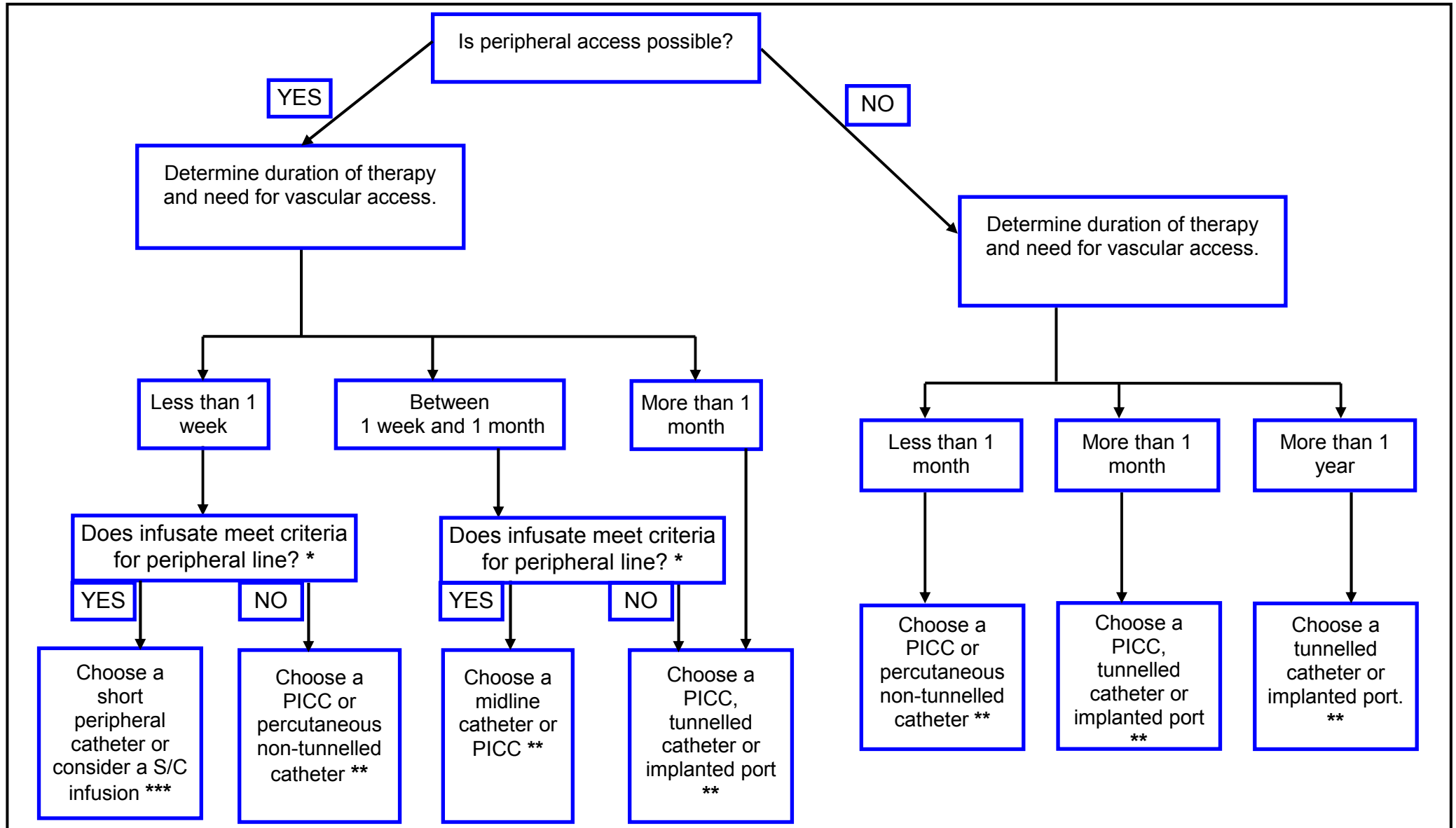


# Selecting an appropriate vascular access device for administration of intravenous fluids and medication



**\* Infusate criteria for use in peripheral infusions:**

- Must be administered at a concentration and rate appropriate for peripheral administration.
- Osmolarity must be 600mOsm/L or less.
- pH must be between 5 and 9.
- Must not be a vasoactive drug.
- Medication must not be a vesicant or irritant.

**\*\* Catheter lumens:**

- Consider the need for single or multi-lumen catheter to deliver the prescribed therapy.
- Select the least number of lumens to deliver the required therapy.

**\*\*\* Considerations for subcutaneous infusion (S/C) include:**

- Hydration, intermittent infusions, and continuous infusions of isotonic fluids and a few selected medications.
- Patient assessed appropriately for this mode of therapy.